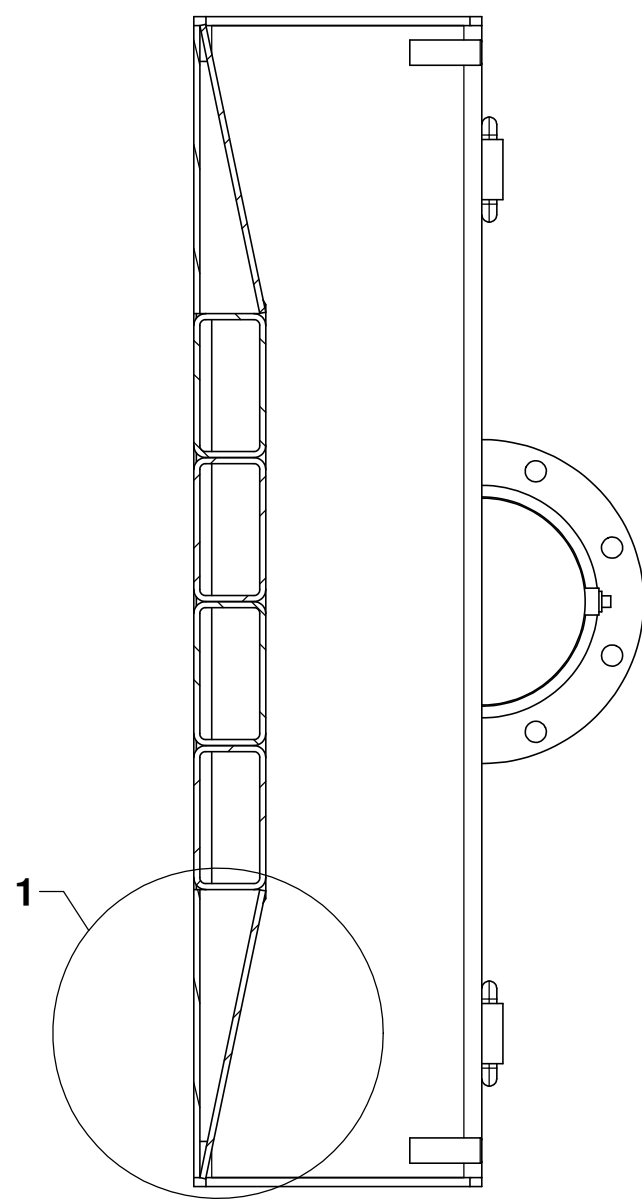
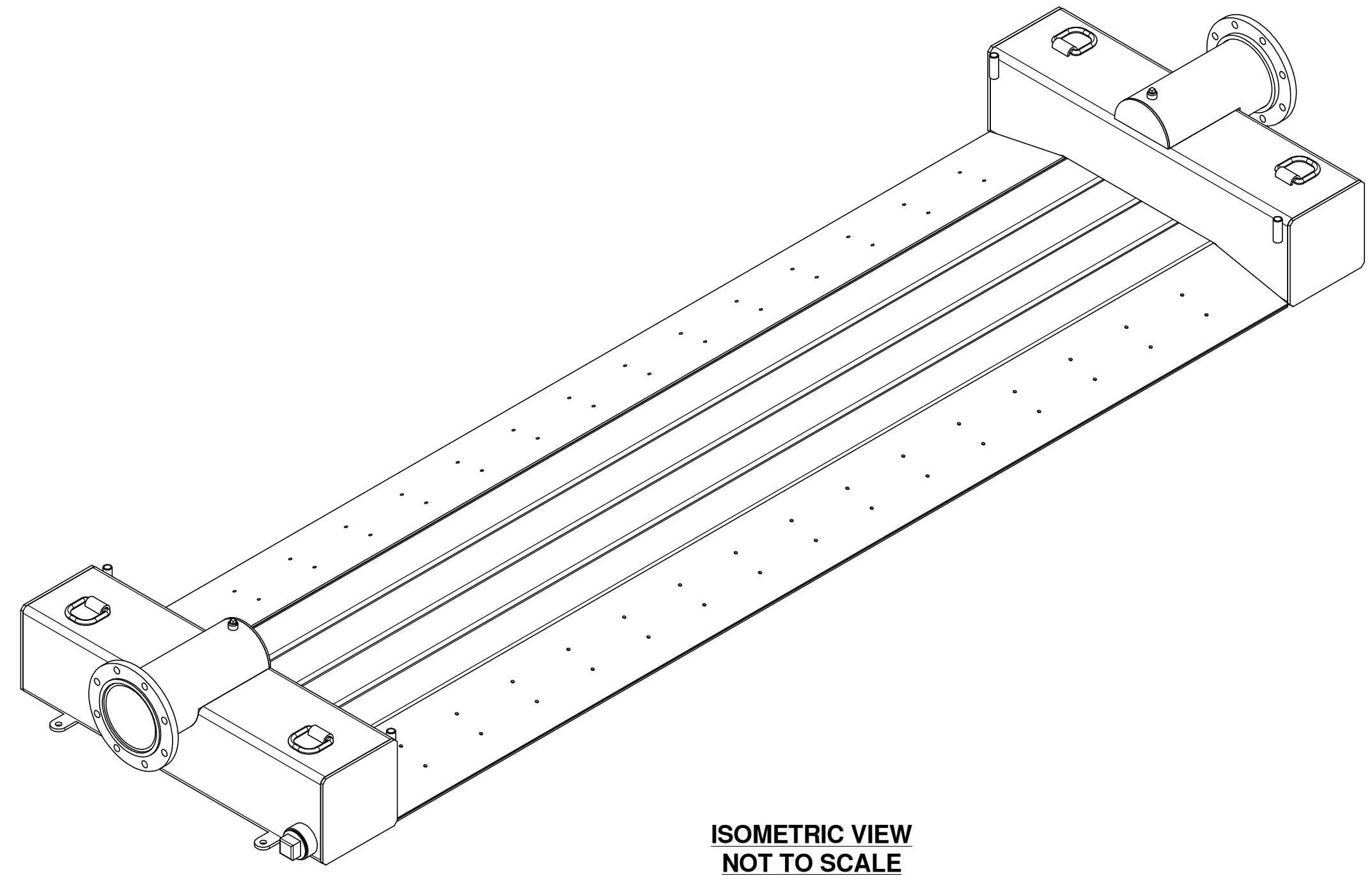
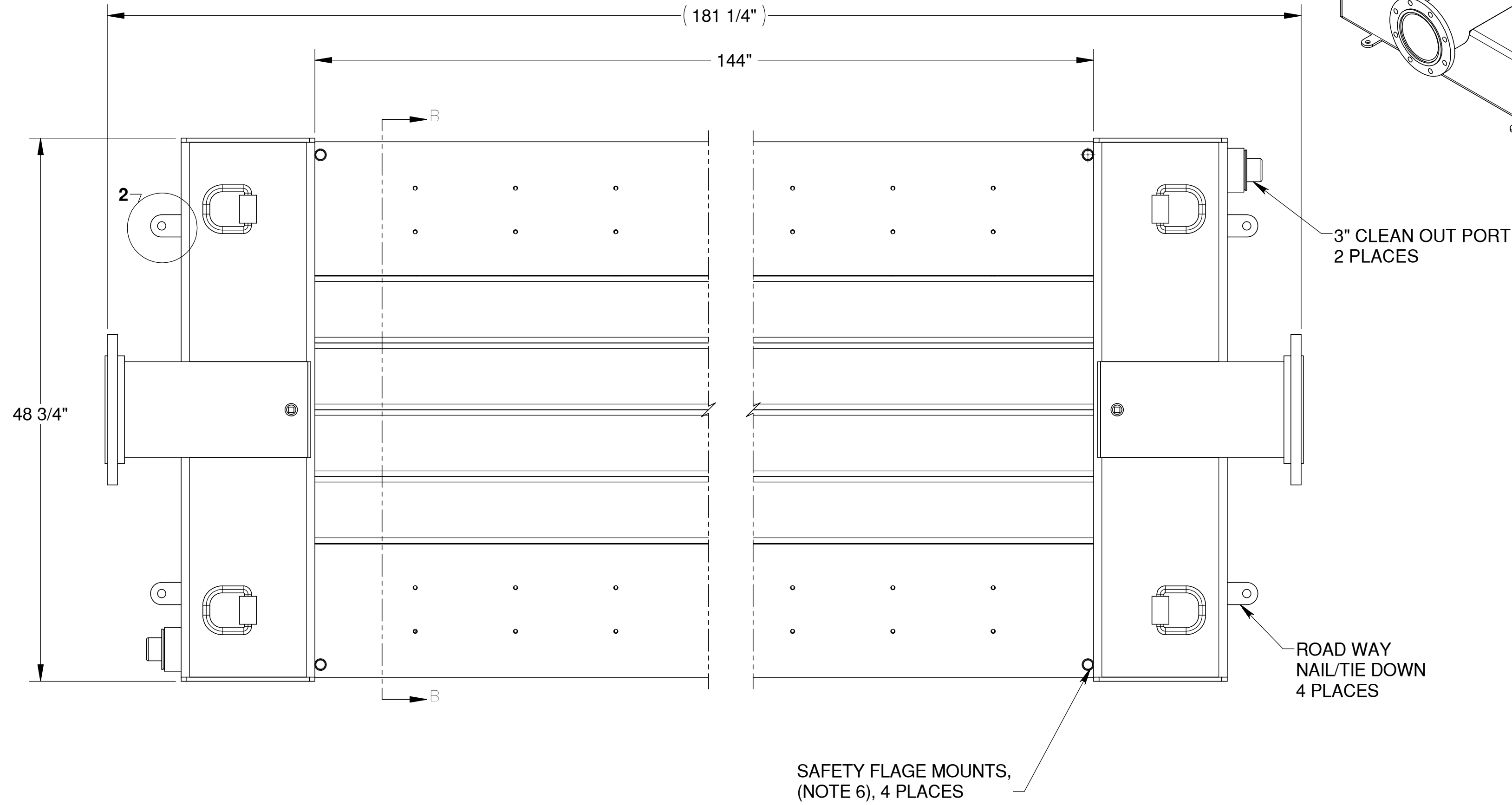


DETAIL 2
SCALE 1 : 4
4 PLACES

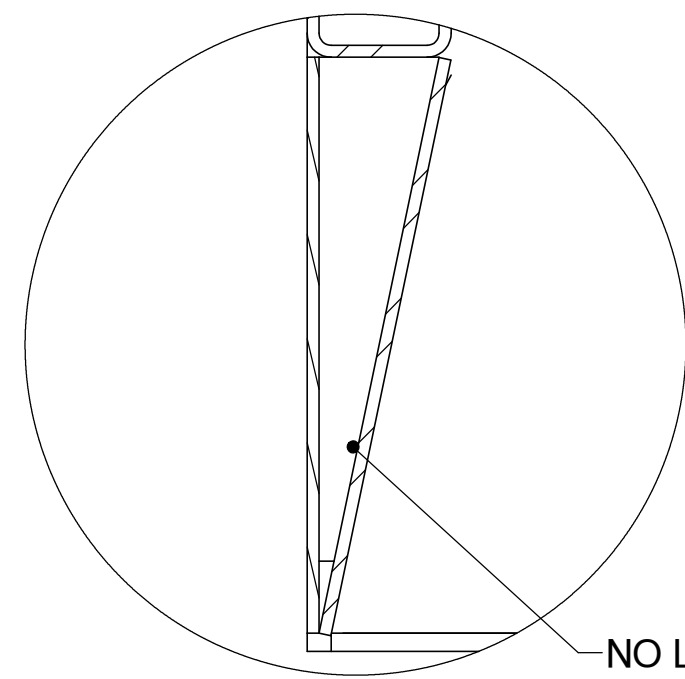


SECTION B-B



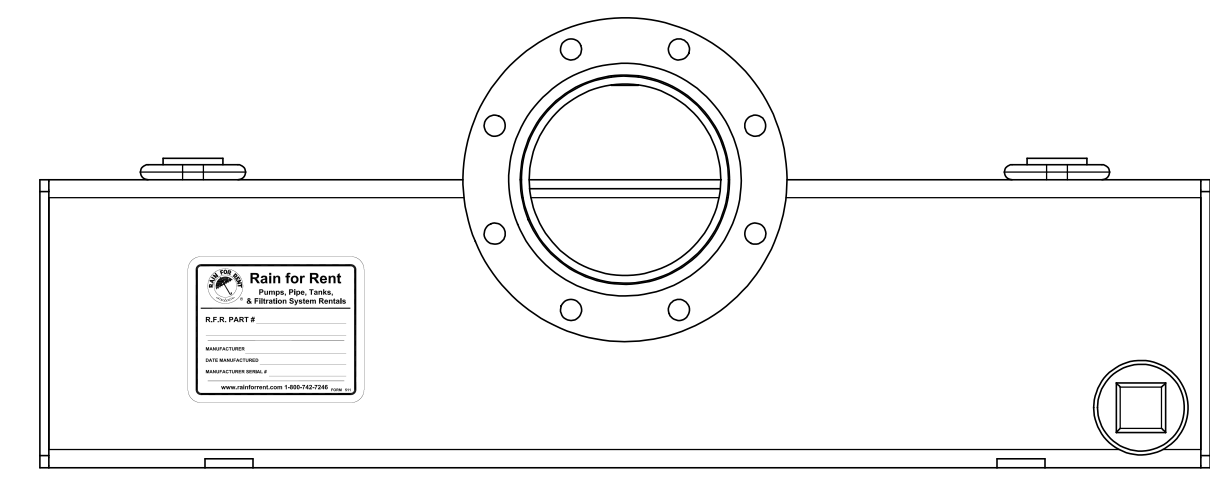
ISOMETRIC VIEW
NOT TO SCALE

- NOTE:**
1. GALVANIZED IN ACCORDANCE WITH ASTM A 384 & A 385 STANDARDS.
 2. ADD WHITE OR ORANGE D.O.T. REFLECTOR TAPE AS INDICATED ON SQUARE TUBING. (GRAINGER PART # - WHITE 1F017 - ORANGE 1F019)
 3. PLACE A 6" RAIN FOR RENT LOGO STICKER WITH 1-800 NUMBER, FORM #437, AS INDICATED. (ORDER R.F.R. 1-800 DECAL FROM RAIN FOR RENT.)
 4. PRESSURE TEST BEFORE AND AFTER GALVANIZING WITH WATER AT 112 PSI FOR MINIMUM OF 5 MINUTES TO CHECK FOR LEAKS.
 5. WORKING PRESSURE 75-PSI MAX.
 6. MOUNTING POINTS FOR STANDARD SAFETY WARNING FLAGS, (GRAINGER ITEM #4A415, 18" X 18" RED/ORANGE WITH 3/4" DIAMETER DOWEL OR EQUIVALENT), (SUPPLY WITH ROAD CROSSING)
 7. APPROXIMATE WEIGHT - _____ LBS. EMPTY.
 8. MAINTAIN FLANGE SURFACE..
 9. USE DECAL (FORM #511) TO STAMP ASSEMBLY WITH MANUFACTURE NAME AND DATE ASSEMBLY WAS MANUFACTURED.
 10. CONTACT RAIN FOR RENT ENGINEERING DEPARTMENT FOR APPROVAL BEFORE ANY CHANGE IN DESIGN.



DETAIL 1
SCALE 1 : 4

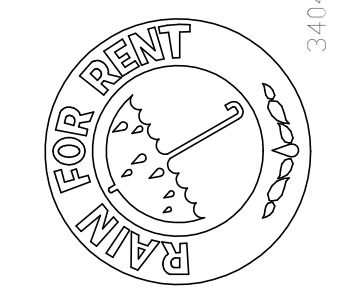
NO LIQUID PASSES THROUGH ANGLED PART



8" X 12' ROAD CROSSING
W/ EXTENDED ANGLES

SALES / REFERENCE DRAWING

Rain For Rent
Engineering



ALL INFORMATION CONTAINED IN OR DISCLOSED BY THIS DOCUMENT IS CONSIDERED CONFIDENTIAL AND PROPRIETARY BY RAIN FOR RENT. ALL DISCLOSURES BY PERSON INFORMATION AND REPRODUCTION OF THIS DOCUMENT AND ALL SALES RIGHTS ARE EXCLUSIVELY RESERVED BY AND TO RAIN FOR RENT AND COMMUNICATION OF THIS INFORMATION TO OTHERS IS PROHIBITED WITHOUT THE PRIOR WRITTEN CONSENT OF RAIN FOR RENT.

DATE: 12/11/2003
SCALE: 1:8
DESIGNED BY: K.KROSS
CHECKED BY: K.KROSS
M.STEVENS

JOB NUMBER: 1021213
DRAWING NUMBER: 103509~1_1
SHEET: 1 of 1

2	ADDED NOTES AND CHANGED 1/4"X12X12 PLATE TO 3/8"X12X12 PLATE	103509~1_1	MS	3/24/2004
1	CHANGED 1/4" WALL, 12X12 SQ. TUBE TO 3/8" WALL	103509~1_1	MS	3/23/2004
REV.NO.	DESCRIPTION	PREV.DWG	BY	DATE